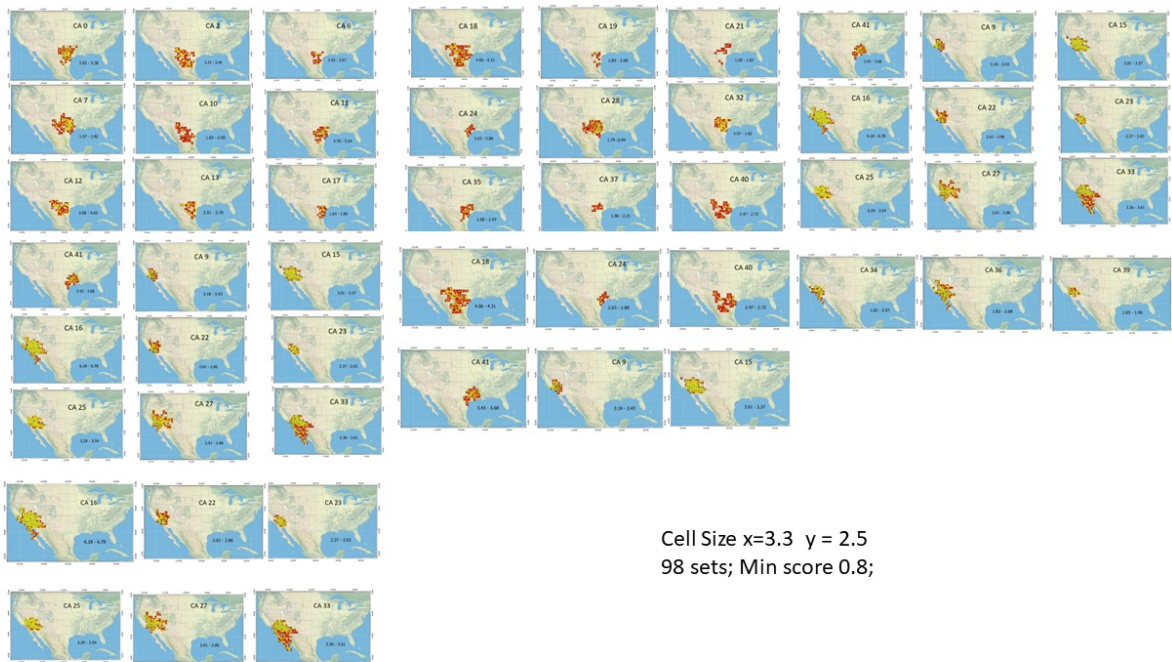
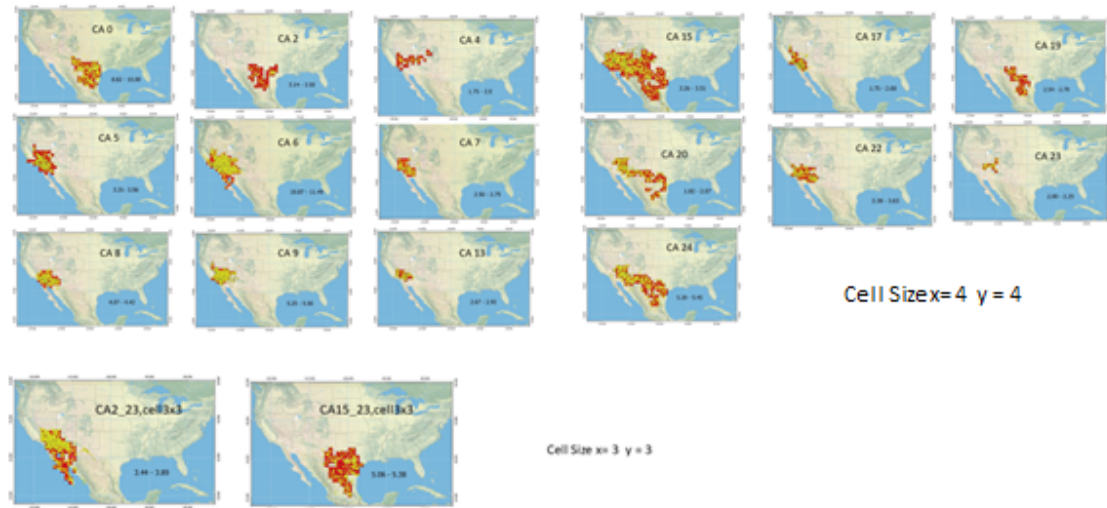


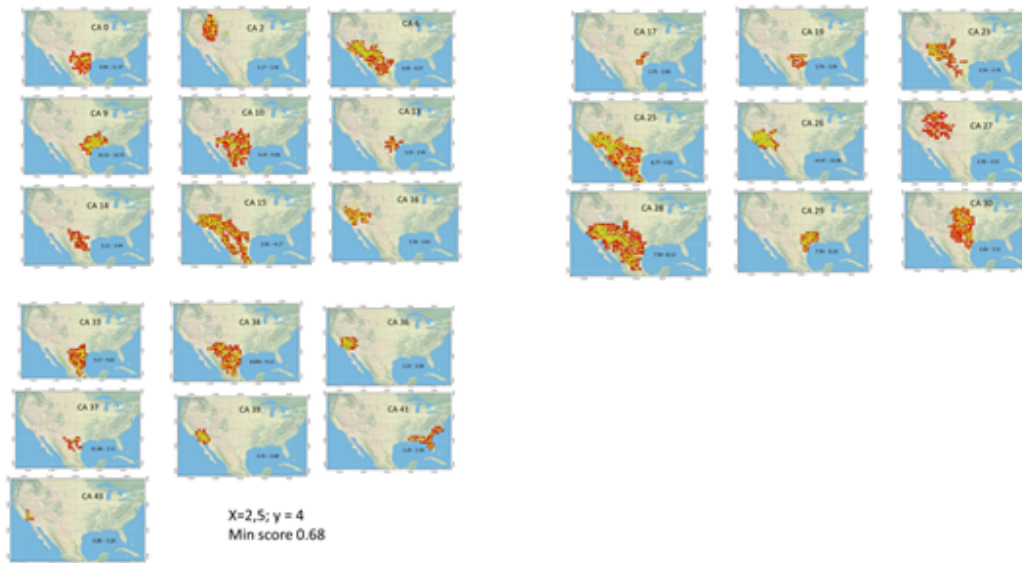
**Appendix S6. Maps of consensus areas of all analyses.**



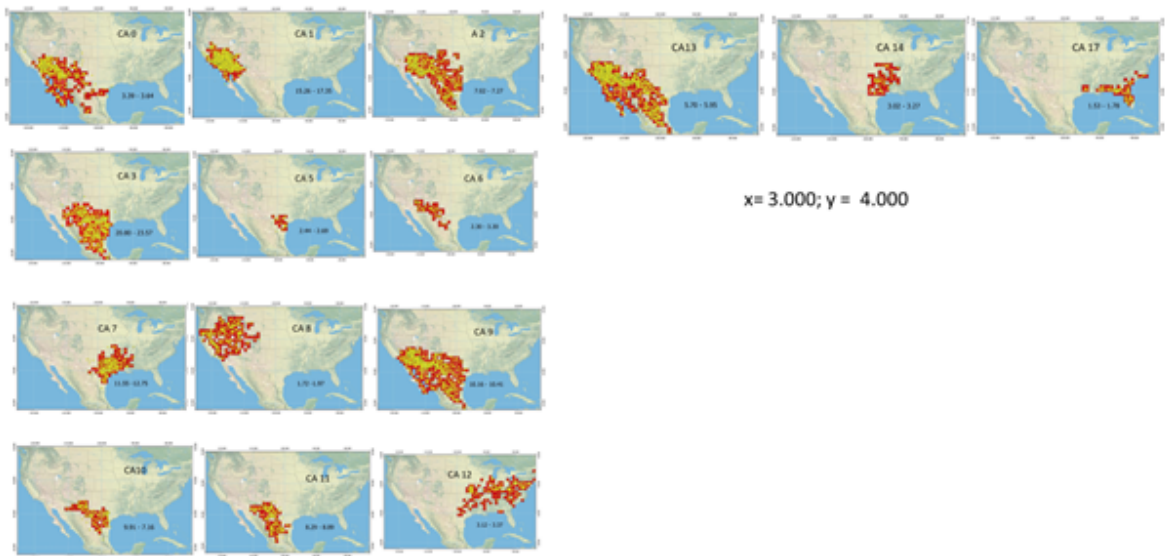
**Figures S3.** Maps of consensus areas of the analysis with cells:  $x = 3.3$ ,  $y = 2.5$ .



**Figures S4.** Maps of consensus areas of the analysis with cells: 4 x 4 and two CAs of a preliminary analysis with cell size 3 x 3.



**Figures S5.** Maps of consensus areas of the analysis with cells:  $x = 2.5$ ,  $y = 4$ .



**Figures S6.** Maps of consensus areas of the analysis with cells:  $x = 3$ ,  $y = 4$ .